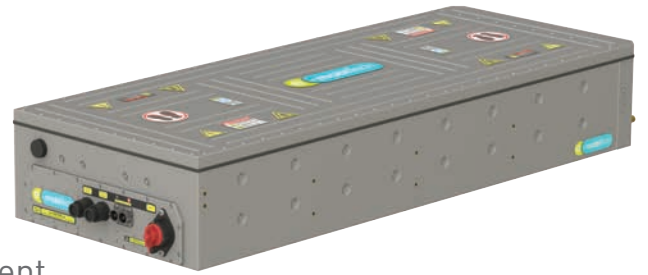


60 Series NMC 604 Battery

Energy & Power Optimized Battery Pack

SYSTEM FEATURES

- ✦ Power and Energy optimized
- ✦ Cycle Life Expectancy > 2500 Cycles
- ✦ Liquid Thermal Management
- ✦ Integrated BMS and CAN 2.0A Controlled
- ✦ Integrated Precharge and Isolation Measurement
- ✦ Parallel Topology for Multiple Packs in One Vehicle
- ✦ Development according to ECER100.2, ECER10 and UN38.3 - possible
- ✦ Development according to ISO26262 upto ASIL C - possible



BATTERY PACK SPECIFICATIONS

ELECTRICAL DATA	VALUE	UNIT
Cell Type	NMC	
Energy (Installed / Usable)	57.7 / 52	kWh
Capacity	150	Ah
Nominal Voltage	385	V
Voltage - min. / max	291 - 436	V
Charge Power Cont.	58	kW
Charge Power Peak	69.6	kW
Discharge Power Cont.	58	kW
Discharge Power Peak	160	kW
Cycle Life Expectancy @80DOD	> 2500	Cycles

MECHANICAL DATA		
Pressure drop @10l/min and 25°C	< 0.5	bar
Operating Temp. during discharging	-30 ~ 55	°C
Protection classes	IP67	
Weight	430 ± 10	kg
Dimension	1665 x 650 x 285	mm

SYSTEM OPTION 1

Vehicle PDU

HV Distribution



SYSTEM OPTION 2

Battery System PDU

2-8 Parallel Battery Pack



DIMENSIONS

