

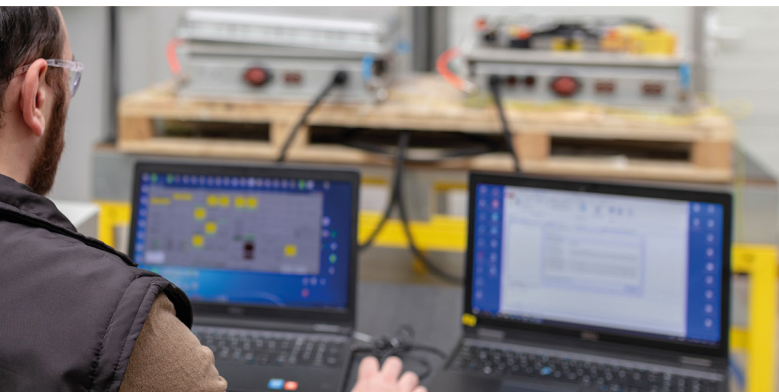
# NMC 370 Battery (37kWh , 372V)

Energy & Power Optimized Battery Pack

## SYSTEM FEATURES



- ✦ Power and Energy optimized
- ✦ Cycle Life Expectancy > 3000 Cycles
- ✦ Liquid thermal management
- ✦ Integrated BMS and CAN 2.0A Controlled
- ✦ Integrated Precharge and Isolation Measurement
- ✦ Parallel Topology for Multiple Packs in One Vehicle
- ✦ Development according to ECE R100.2, ECE R10 and UN38.3 - possible
- ✦ Development according to ISO 26262 upto ASIL C - possible



**BATTERY PACK SPECIFICATIONS**

ELECTRICAL DATA	VALUE	UNIT
Cell Type	NMC	
Energy (Installed / Usable)	37 / 33	kWh
Capacity	100	Ah
Nominal Voltage	372	V
Voltage - min. / max	306 - 438	V
Charge Power Cont.	37	kW
Charge Power Peak 10s	160	kW
Discharge Power Cont.	37	kW
Discharge Power Peak 10s	160 - (Optional 250)	kW
Expected Cycle Life*	>3000	Cycles

MECHANICAL DATA		
Pressure drop @10l/min and 25°C	<0.5	bar
Operating Temp. during discharging	-30 ~ 55	°C
Protection classes	IP67	
Weight	276 ± 10	kg
Dimension	1310 x 650 x 285	mm

\* Depends on various parameters like Power, DoD and temperature.

**SYSTEM OPTION 1**

**Vehicle PDU**

HV Distribution



**SYSTEM OPTION 2**

**Battery System PDU**

2-8 Parallel Battery Pack



**DIMENSIONS**

